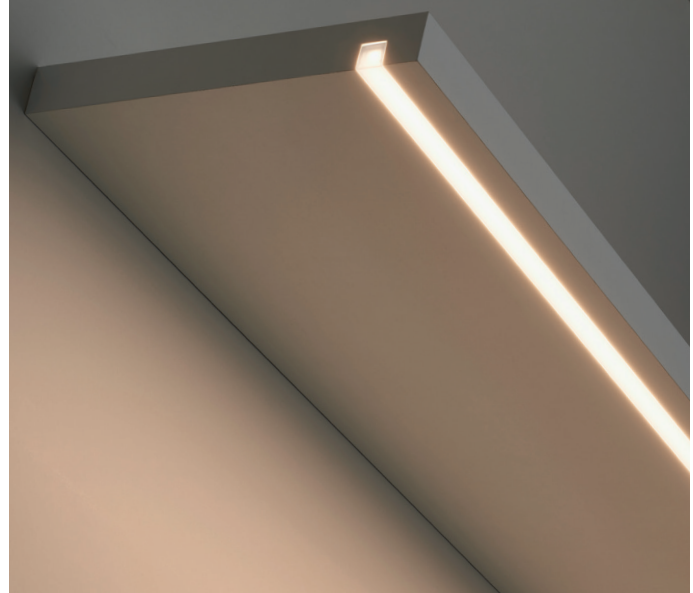


# LD Line 15



Miniature Low Profile 24V Linear Line of Light

Data sheet - Page 1

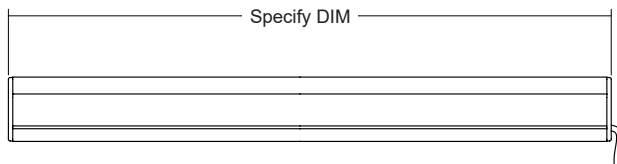
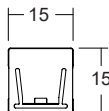


LD Line 15 is an incredibly shallow line of light. It has been designed for indirect applications that require no spotting of LEDs. With a depth of only 15mm, it is ideal for shelves as shallow as 30mm and lighting polished/reflective surfaces. LightGraphix worked very closely with BWF in Germany to create a new polycarbonate extrusion based on their colourLED® technology. The special formulation, coupled with the built in reflector, resulted in a product that achieves no spotting from the LEDs whilst achieving minimal efficiency losses.

## Key Features

- Very shallow 15mm depth
- No spotting of LEDs
- Built in reflector
- Extruded polycarbonate ColourLED® technology with increased light transmission over conventional opal diffusers
- Range of fixing options depending on the detail
- Rigid profile
- Very minimal 1mm thick end caps
- IP54 as standard
- IP67 rated version for wet environments
- Very cost effective solution when IP40/44 is not enough, and the alternative is an expensive IP68 rated product
- Lengths are custom made to suit to a maximum of 4013mm\*\*, so no dark spots!
- Available with Switched, 1-10V, DMX or Dali drivers

## Dimensions



(Dimensions in mm)

## Specification

Applications		
Description	Short pitch tape	
Colour Temperature	2400K / 2700K / 3000K	4000K / 5000K
Delivered lumens / m*	490lm/m	530lm/m
CRI	80+	
Lumens per watt*	56lm/w	61lm/w
Voltage (V)	24V DC	
LED cut increments	50mm	
LED spacing	8.3mm	
Min single length	56mm	
Max single length**	4006mm	
LED	Osram Flex	
Watts / m	8.7W/m	
LED lifetime	50,000hrs (to 70% lumen output)	
Max ambient temperature	45°C	
Materials	Anodised aluminium, polycarbonate colourLED® profile polycarbonate end caps	
Cable length	2m (can be specified with up to 10m at extra cost)	
IP rating	IP54 (IP67 option)	

\* Shipping and practicalities of installation need to be considered when specifying long lengths

# LD Line 15

Miniature Low Profile 24V Linear Line of Light

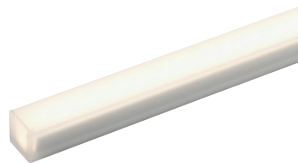


Data sheet - Page 2

## Fixing Options

### /NF

- No fixing supplied. Product is bonded directly into mounting surface. Ideal for routed grooves in 30mm thick shelves



(Dimensions in mm)

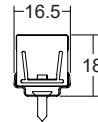
### /3M

- 3M adhesive tape is suitable for most applications and will provide a very good bond to metal, wood and painted surfaces. 1mm thickness allows for any bumps in the mounting surface. Ideal for routed grooves where the fitting needs to sit flush. Indoor only applications.



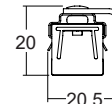
### /SC

- Stainless steel fixing clips are ideal for exterior environments. For example under steps or around water features



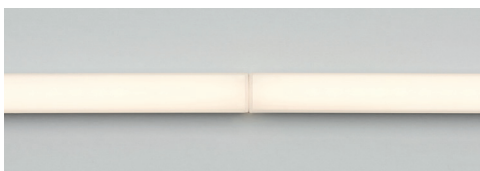
### /LBM

- 'L' bracket mounting with spring clip. Ideal for mounting under steps where access may be restricted.

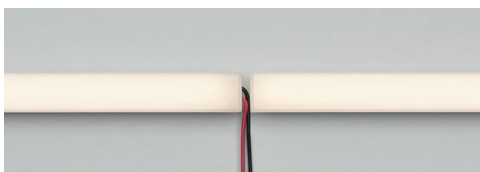
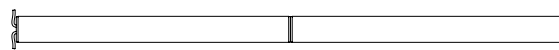


## Mounting detail notes

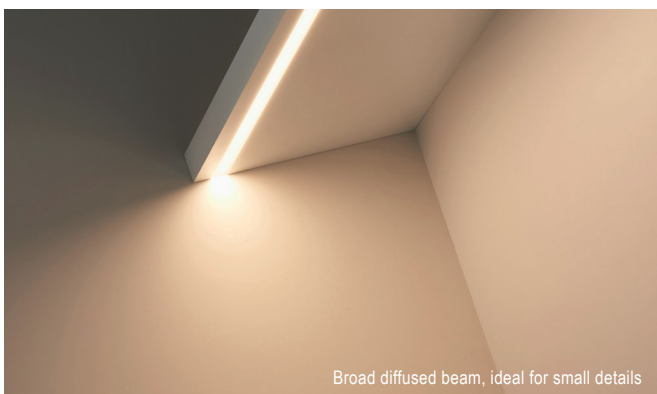
End caps are only 1mm thick, and the material matches the linear profile, enabling a very neat join between two non-cable feed ends. The images show the IP54 rated version. Please see page 3 for a note on IP67 lengths



2 x 4m lengths can be used to create an 8m run



If more than 2 lengths are used (over 8m run) then they would need to be arranged as per below



Broad diffused beam, ideal for small details



No spotting when used over reflective/polished surfaces

# LD Line 15

Miniature Low Profile 24V Linear Line of Light

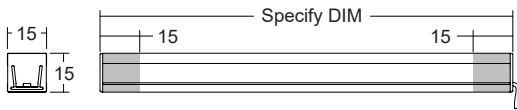


Data sheet - Page 3

## IP67 rated

**/IP67** - LD Line 15 can be supplied as IP67. This can be very useful for lighting the edges of ponds or water features, where the LED can be seen in the reflection of the water.

To achieve an IP67 rating, resin is used to seal each end of the product. This produces a 15mm break between the end of the product and the LED. The result is a slightly less bright zone at each end.

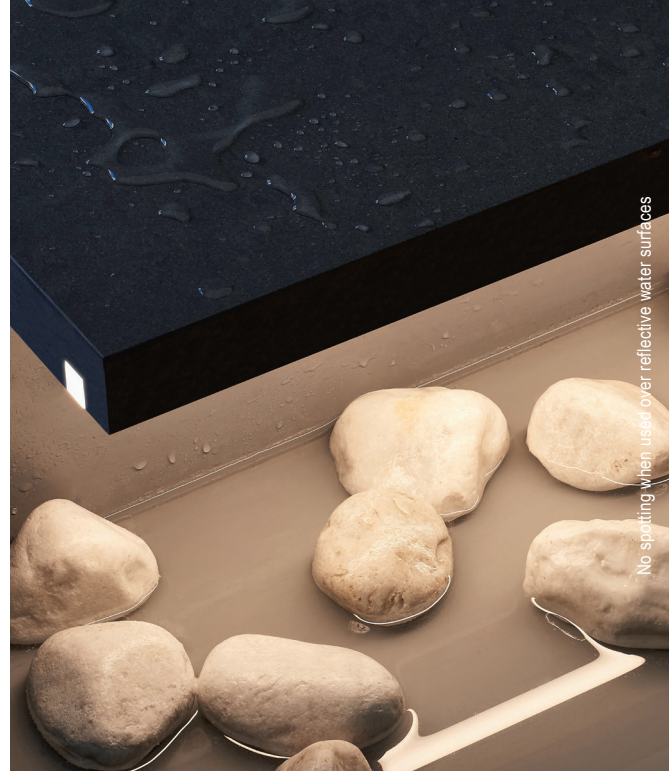
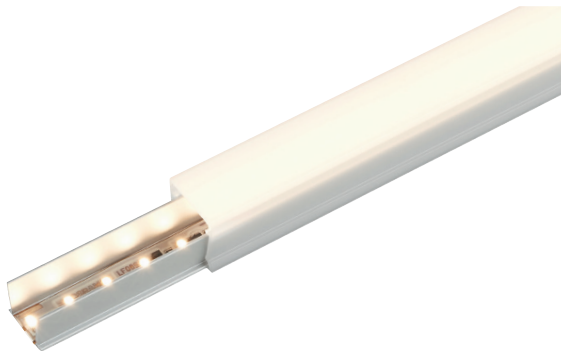


## Linked lengths

LD Line 15 is not suited to having links between lengths as this will create a gap in the light (see mounting note on page 2). If necessary we can link 2 lengths together in details where the product is not seen. Only available with the IP54 version.

## Photometrics

Photometric files are included in the design pack which can be downloaded from the LD Line 15 product page on the website.



## Order Codes and Options

Product code	LED	LED colour	Fixing option	IP rating	Length
LD Line 15	<input type="text"/>	<input type="text"/>	<input type="text"/>	<input type="text"/>	<input type="text"/>

Example: LD Line 15 / Short / LW30 / 3M / IP54 / 2000mm

LED output options		Suffix
Short	780 lm/m	/Short
LED colour options		
Super Warm White (2400K)		/LW24
Extra Warm White (2700K)		/LW27
Warm White (3000K)		/LW30
White (4000K)		/LW40
Cool White (5000K)		/LW50
Fixing options		
No fixing		/NF
3M tape		/3M
Fixing clip (3 fixing clips supplied per metre)		/SC
L bracket mounting		/LBM
IP options		
IP54 (standard)		/IP54
IP67 rated for wet environments		/IP67

### To be used with 24V constant voltage LED Drivers and Controllers

We offer a range of drivers with 1-10V, DMX, and DALI dimming options. Please download the data sheet from the downloads section at [www.lightgraphix.co.uk](http://www.lightgraphix.co.uk), or contact us for more information